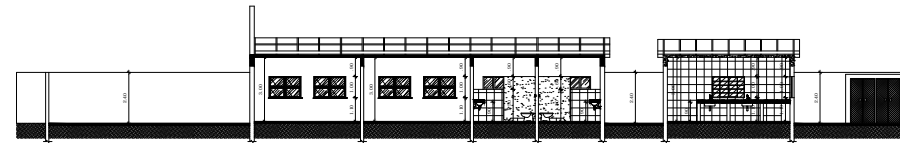
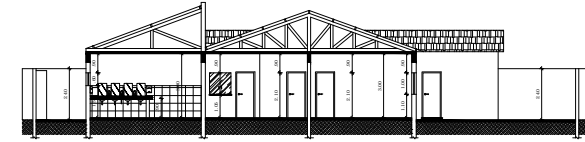


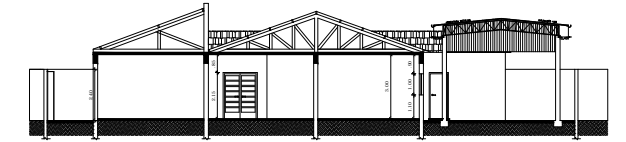
FACHADA
ESC 1:100



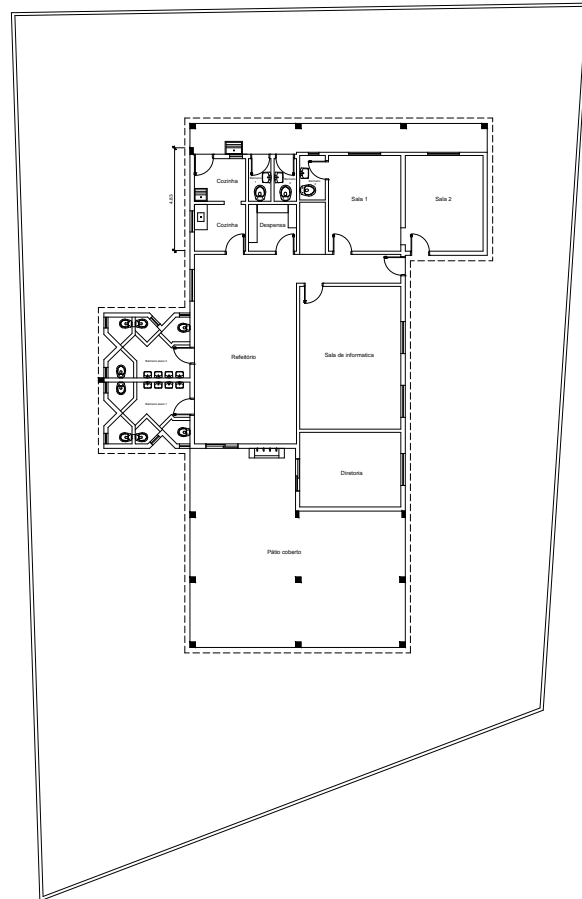
CORTE A-A
ESC 1:100



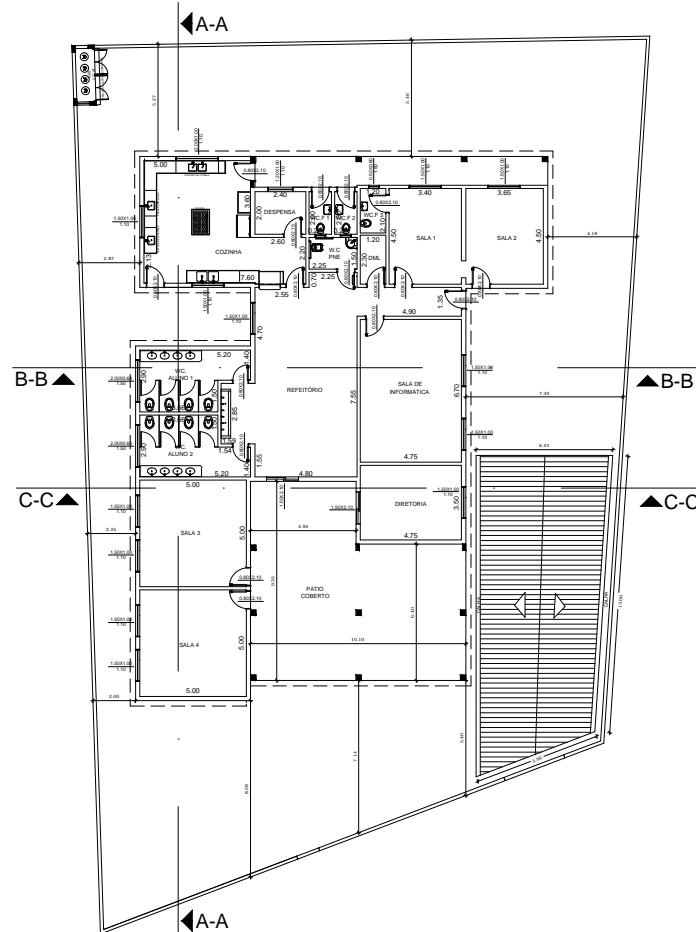
CORTE B-B
ESC 1:100



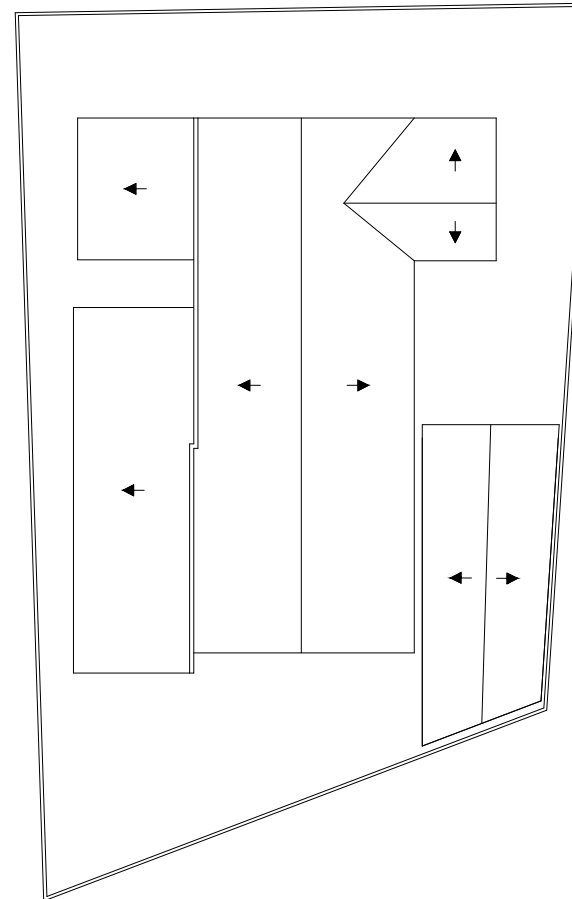
CORTE C-C
ESC 1:100



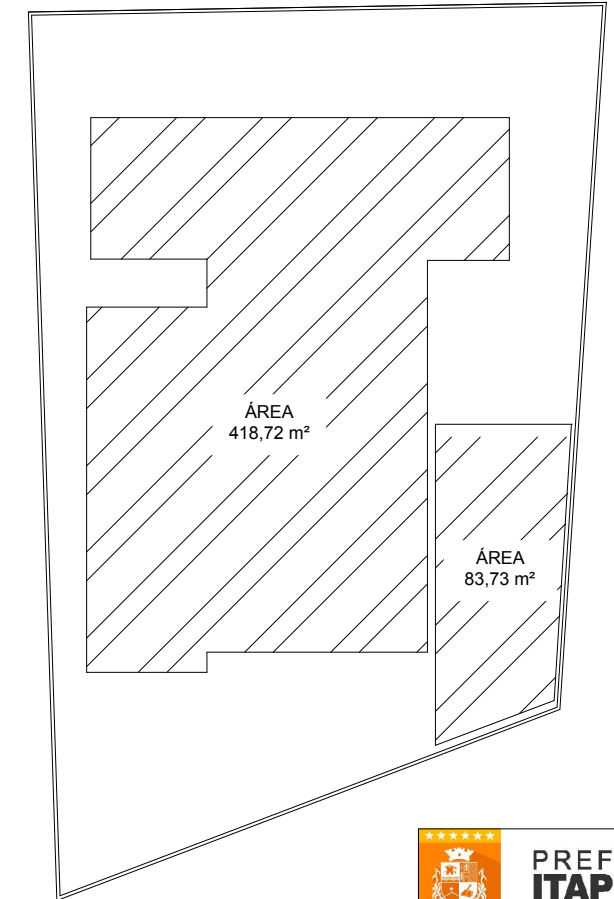
PLANTA BAIXA EXISTENTE
ESC 1:100



PLANTA BAIXA / AMPLIAÇÃO
ESC 1:100



VISTA TELHADO
ESC 1:100



IMPLANTAÇÃO
ESC 1:100

 **PREFEITURA DE ITAPETININGA**
Cuidando da nossa gente

OBRA: REFORMA E AMPLIAÇÃO
CEC JULIANA MARIA CASAGRANDE

DATA: 02/02/2016	ESCALA: 1:100	FOLHA: 1/1
PROF: LUIZ DA SILVA JUNIOR		