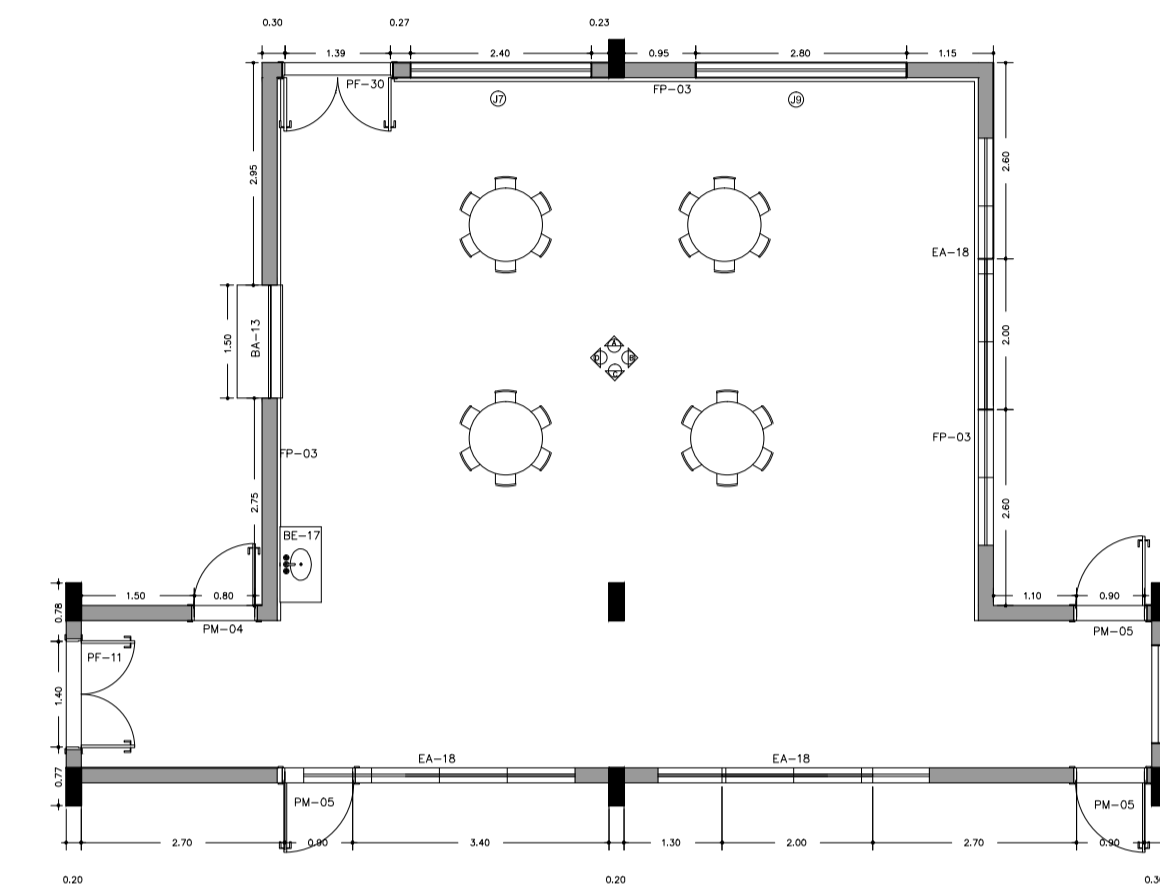
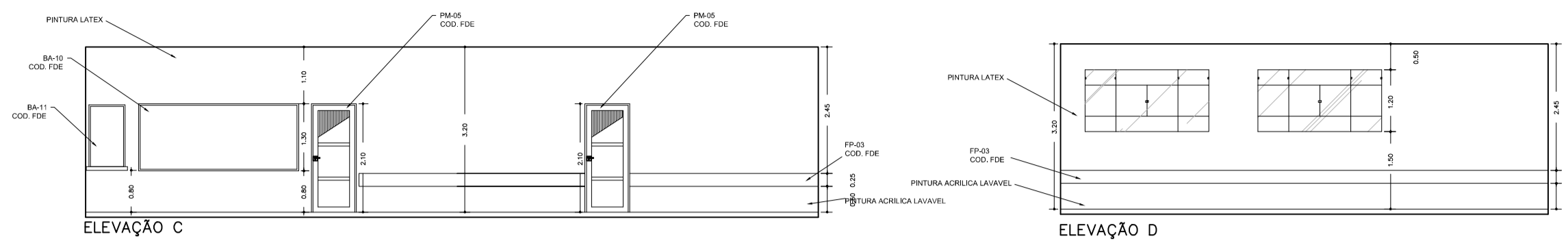
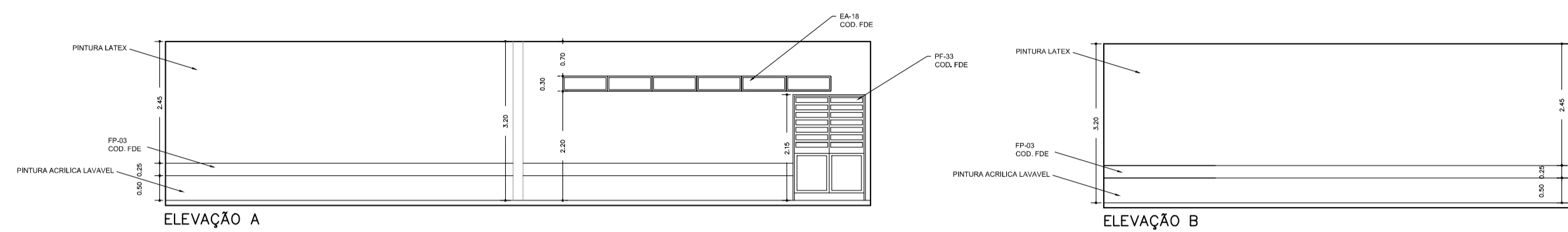
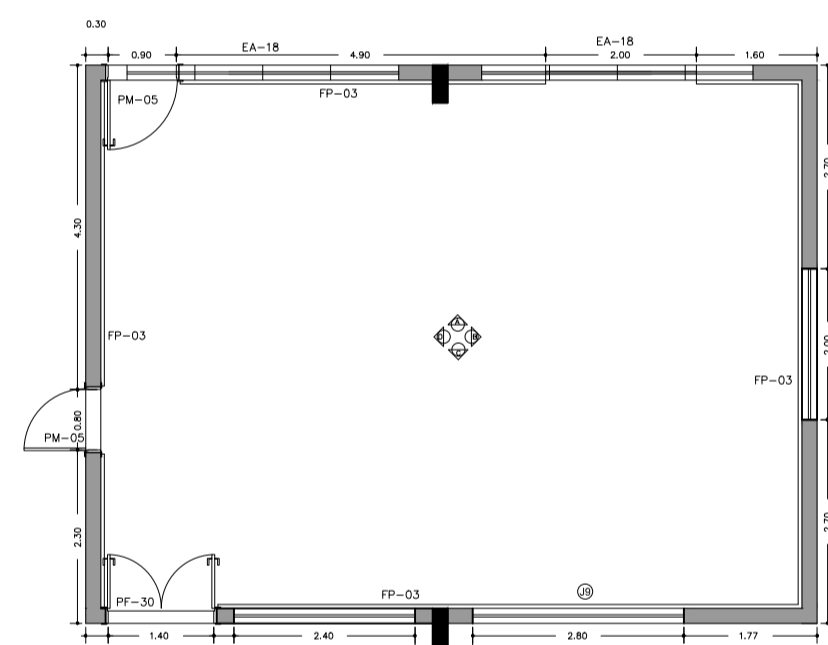
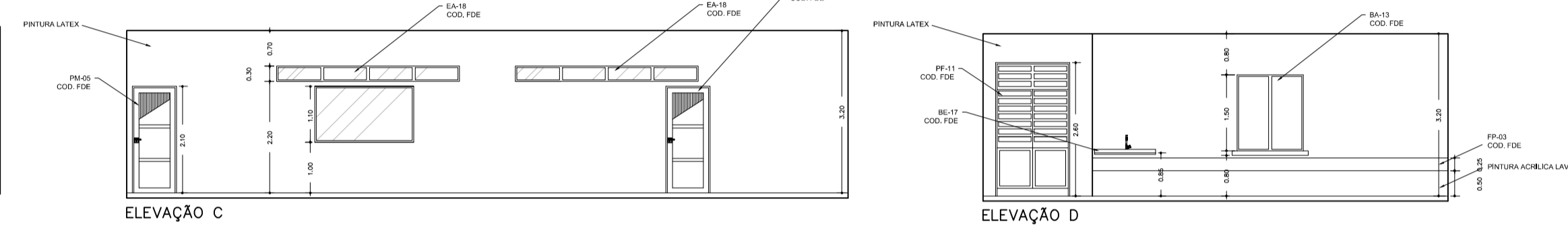
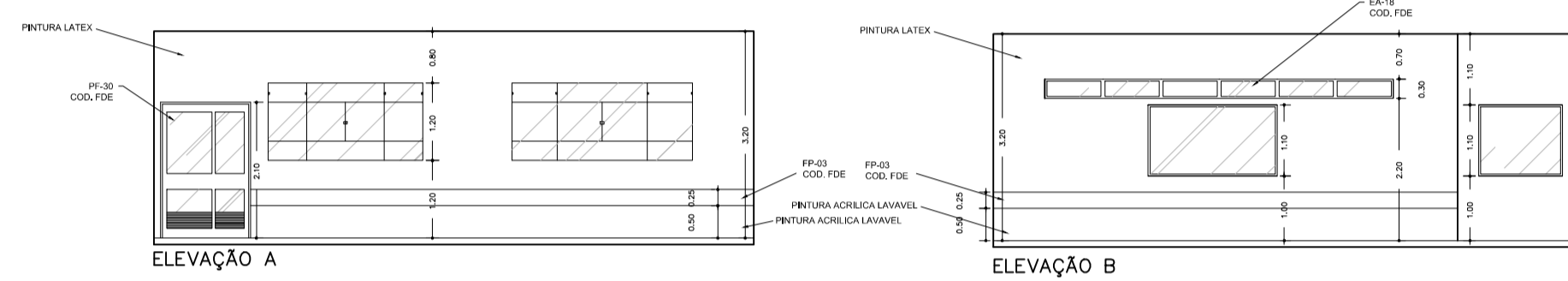


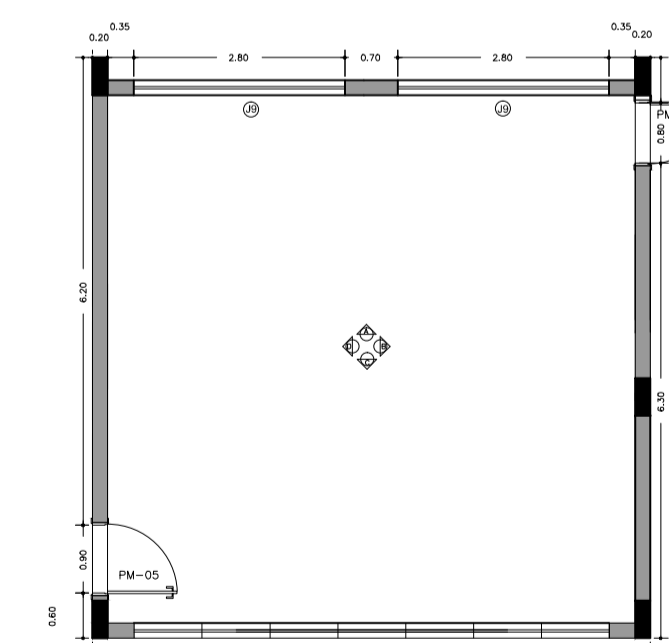
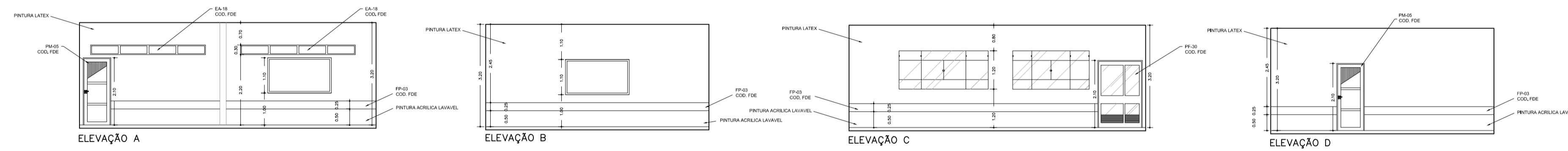
DETALHAMENTO REFEITÓRIO – TÉRREO



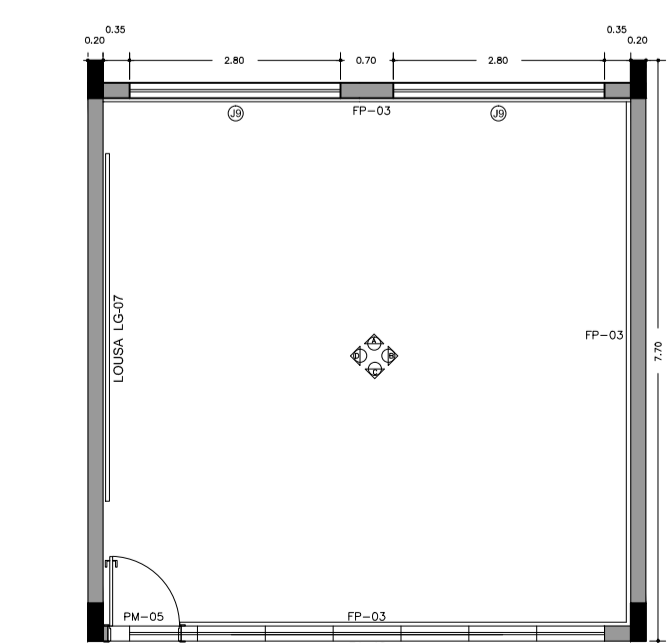
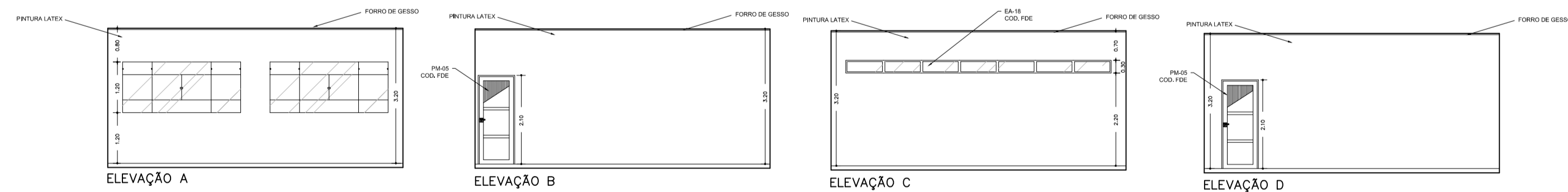
DETALHAMENTO COPA BEBES – TÉRREO



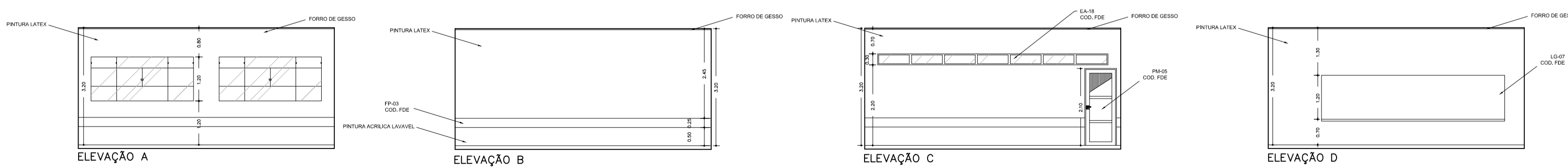
DETALHAMENTO BERÇARIOS – TÉRREO



DETALHAMENTO SALA PROFESSORES – SUPERIOR



DETALHAMENTO JARDIM, MATERNAL, MINI-MATERNAL E MULTIUSO – SUPERIOR



PROJETO ARQUITETÔNICO

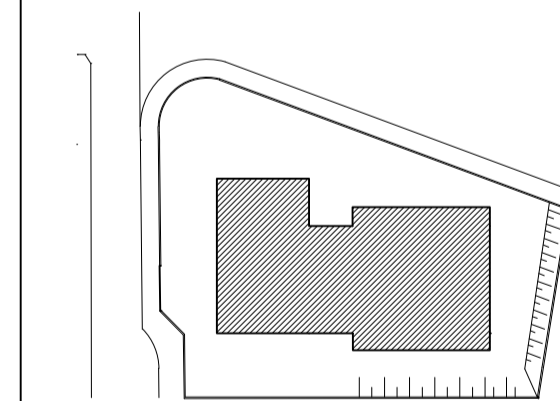
Folha:
11/11

EMEI VILA ARRUDA

ASSUNTO: DETALHAMENTO DAS SALAS
LOCAL: RUA JOSÉ PÉRCIO DOS SANTOS
ITAPETININGA-SP

ESCALAS INDICADAS

PLANTA DE SITUAÇÃO
SEM ESCALA



DECLARO QUE A APROVAÇÃO DO PROJETO,
NÃO IMPLICA NO RECONHECIMENTO, POR
PARTE DA PREFEITURA DO DIREITO DE
PROPRIEDADE DO TERRENO.

PREFEITO MUNICIPAL

QUADRO DE ÁREAS

ÁREA DO TERRENO: 2666,74M²
PAVIMENTO SUBSOLO: 590,84M²
PAVIMENTO TÉRREO: 832,07M²
PAVIMENTO SUPERIOR: 804,06M²
TOTAL A CONSTRUIR: 2226,97M²

RESPONSÁVEL TÉCNICO
ARQ. TIAGO RIBEIRO BARBOSA
CAU: A74168-0