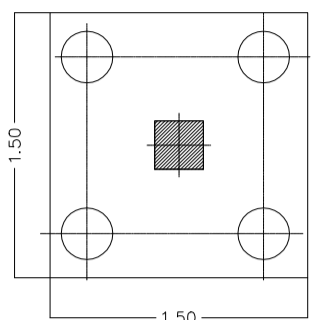
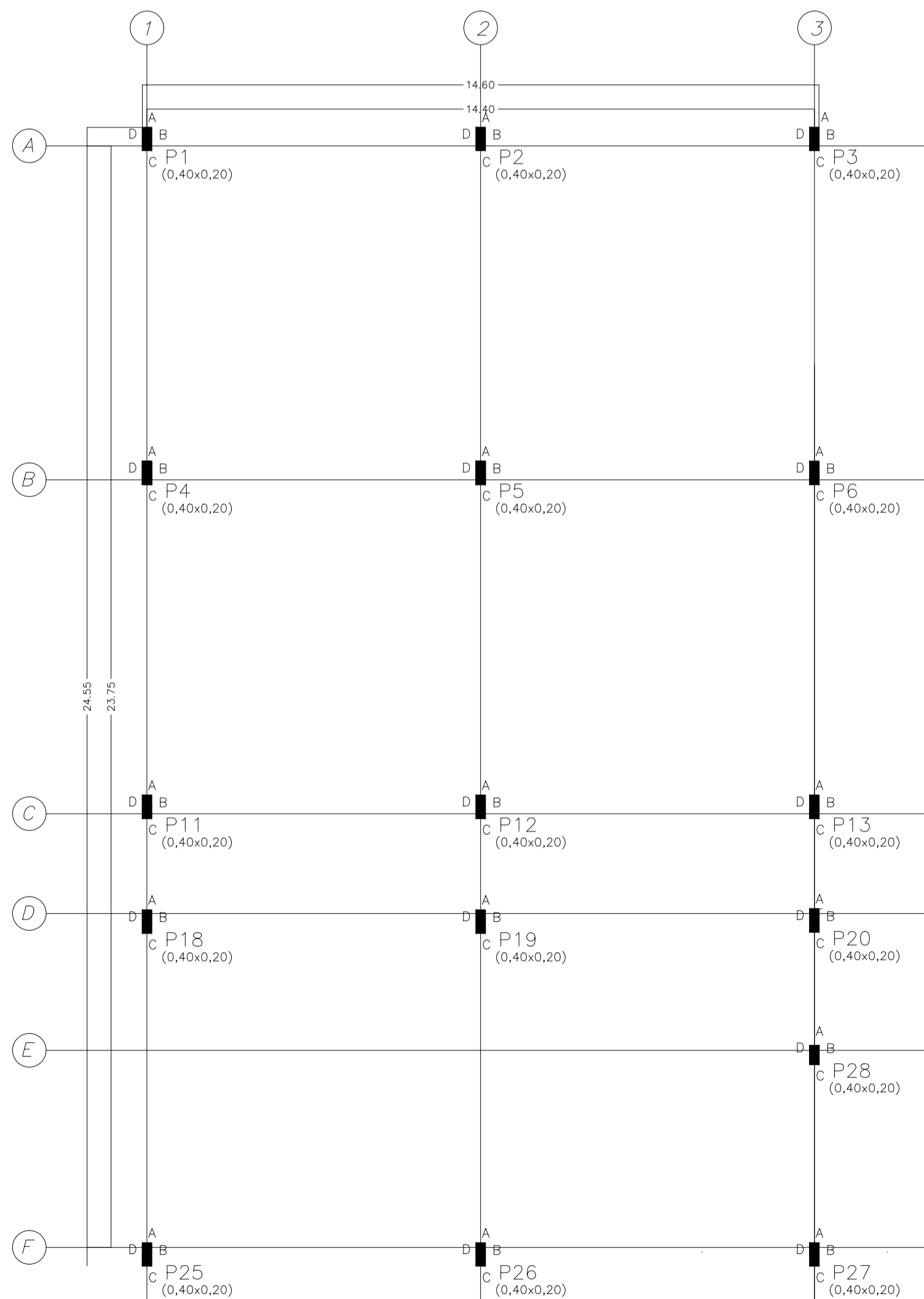
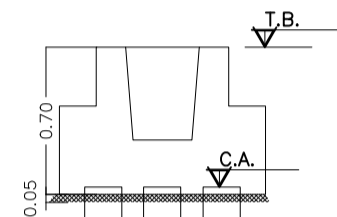
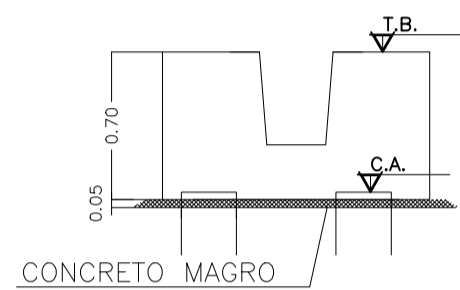
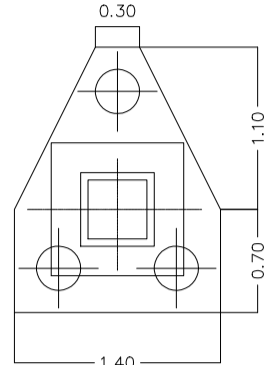


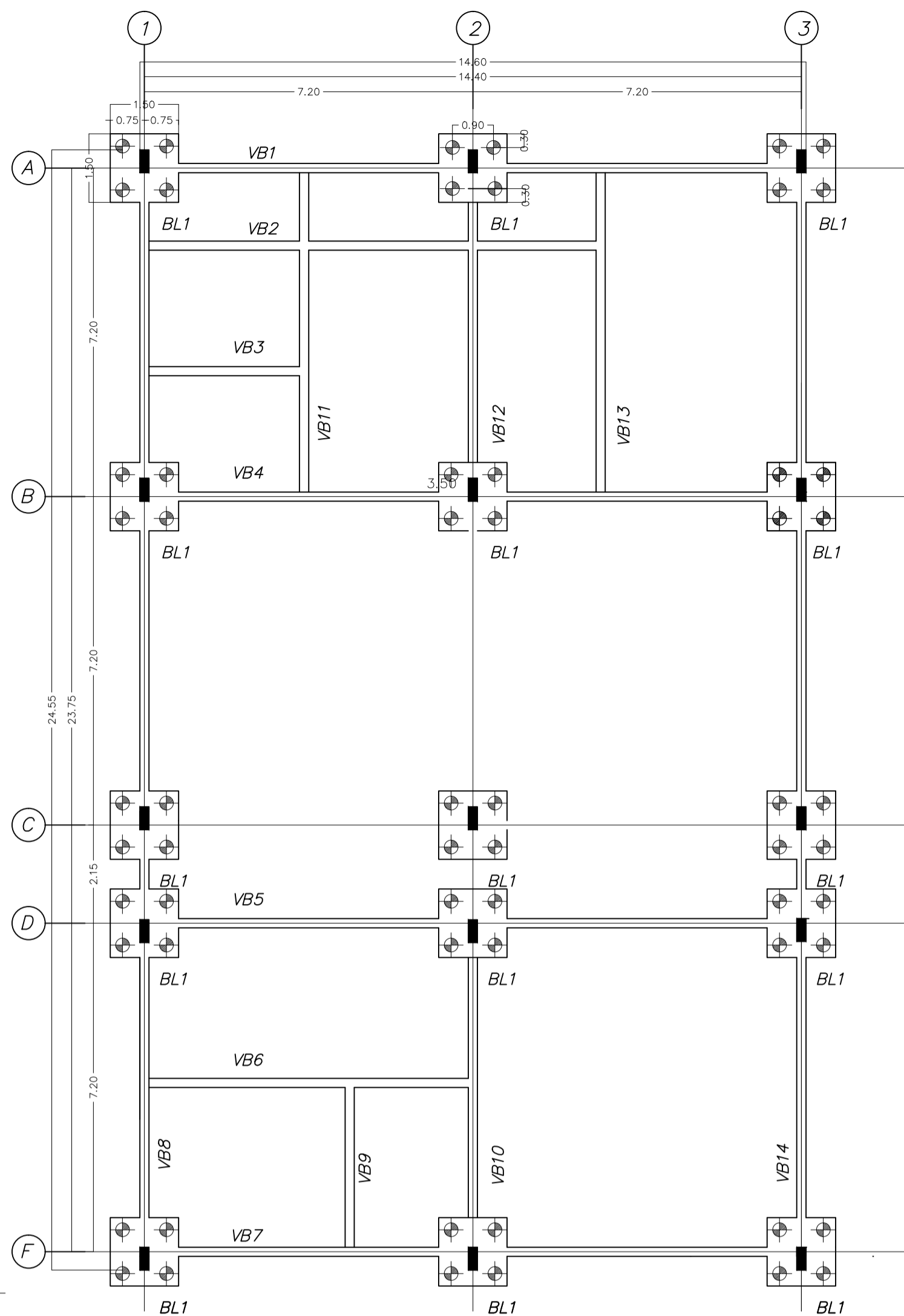
DET. TÍPICO - BLOCO BL1 - 35x  
S/ESC.



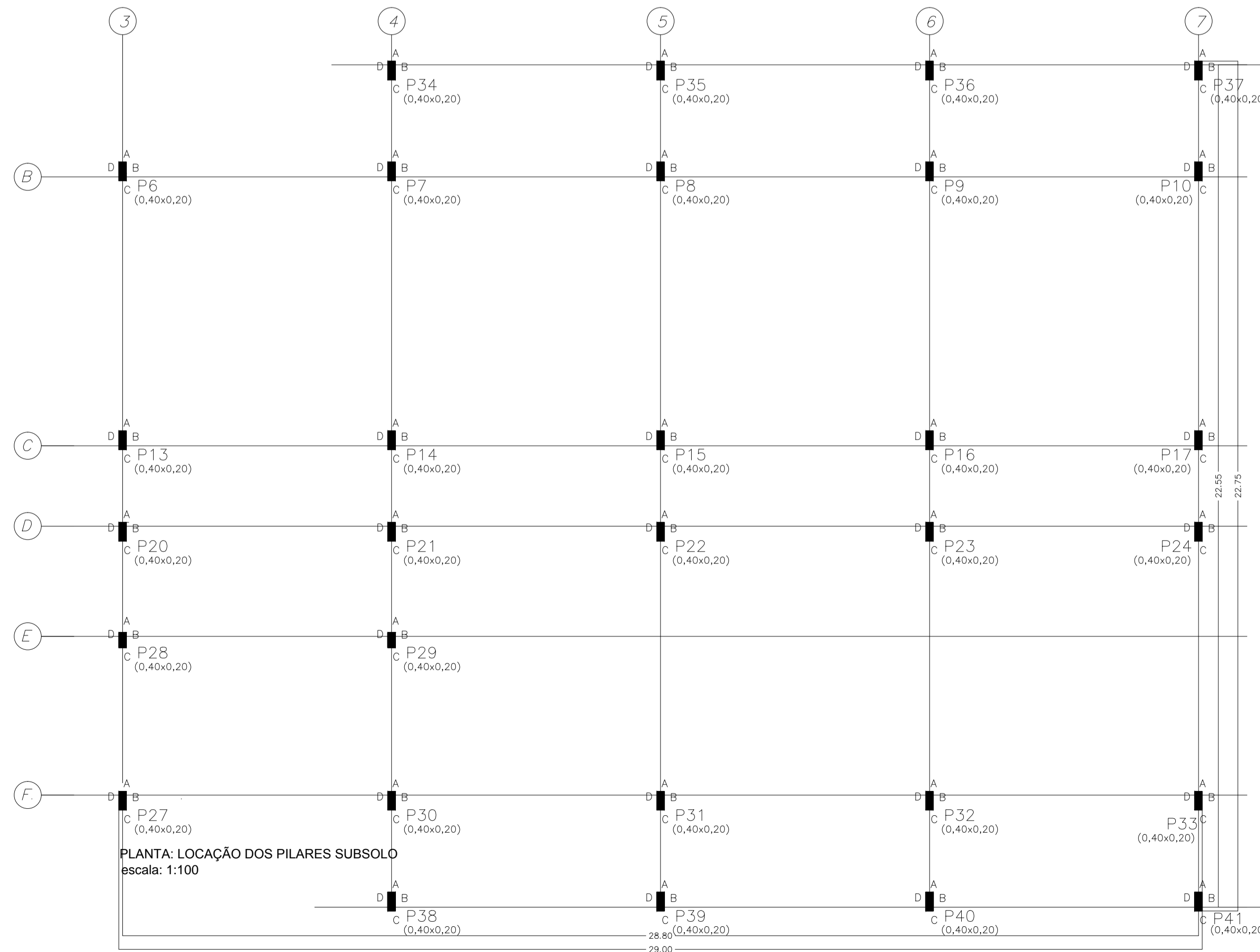
DET. TÍPICO - BLOCO BL2 - 2x  
S/ESC.



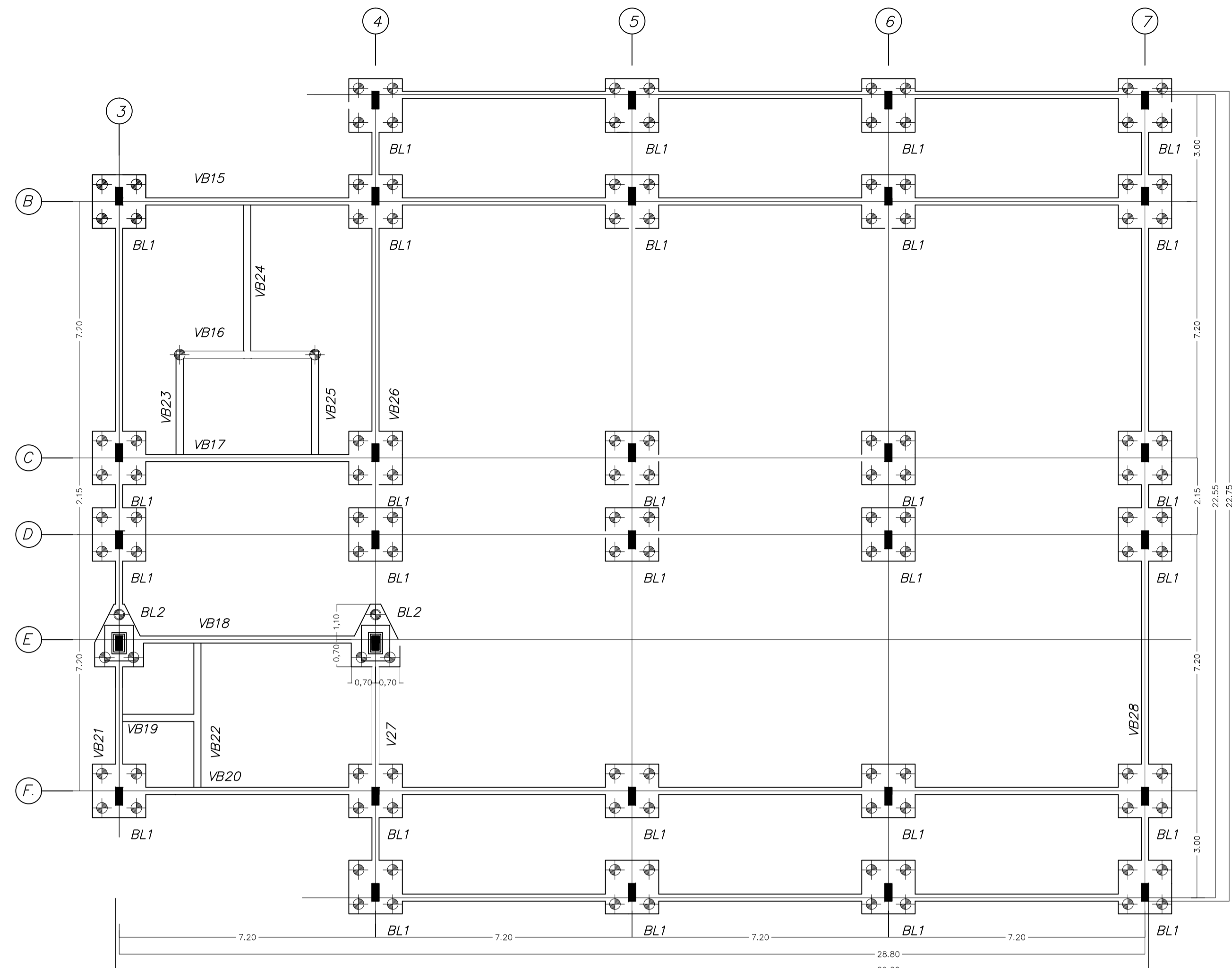
PLANTA: LOCAÇÃO DOS PILARES PAVIMENTO TERREO  
escala: 1:100



PLANTA: LOCAÇÃO DOS BLOCOS E BALDRAMES DO PAVIMENTO TERREO  
escala 1:100

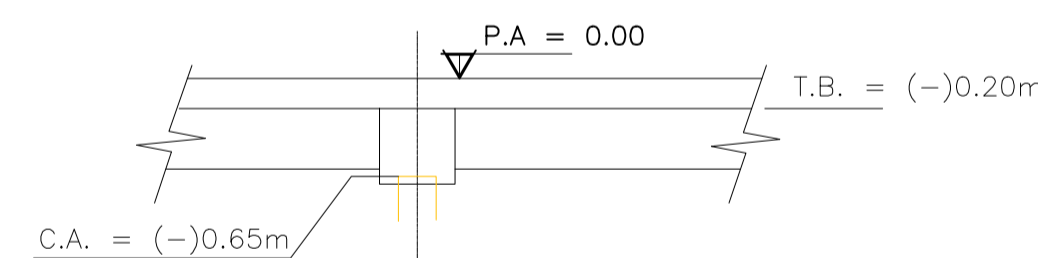


PLANTA: LOCAÇÃO DOS PILARES SUBSOLO  
escala: 1:100



PLANTA: LOCAÇÃO DOS BLOCOS E BALDRAMES DO SUBSOLO  
escala 1:100

DET. TÍPICO - BLOCO P/ BALDRAMES (BLVB)  
S/ESC.



ESTACA ISOLADA P/  
APOIO DE BALDRAMES

# PREFEITURA DE ITAPETININGA

PROJETO ESTRUTURAL BÁSICO:  
EMEI VILA ARRUDA

4/7

LOCAL: RUA JOSÉ PÉRCIO DOS SANTOS  
ITAPETININGA - SP

TÍTULO: LOCAÇÃO DOS PILARES, BLOCOS E BALDRAMES

ESCALA: 1:100

RESPONSÁVEL TÉCNICO:

TIAGO RIBEIRO BARBOSA  
ARQUITETO URBANISTA CAU: A74168-0

DATA: 14/02/2014

REVISÃO: