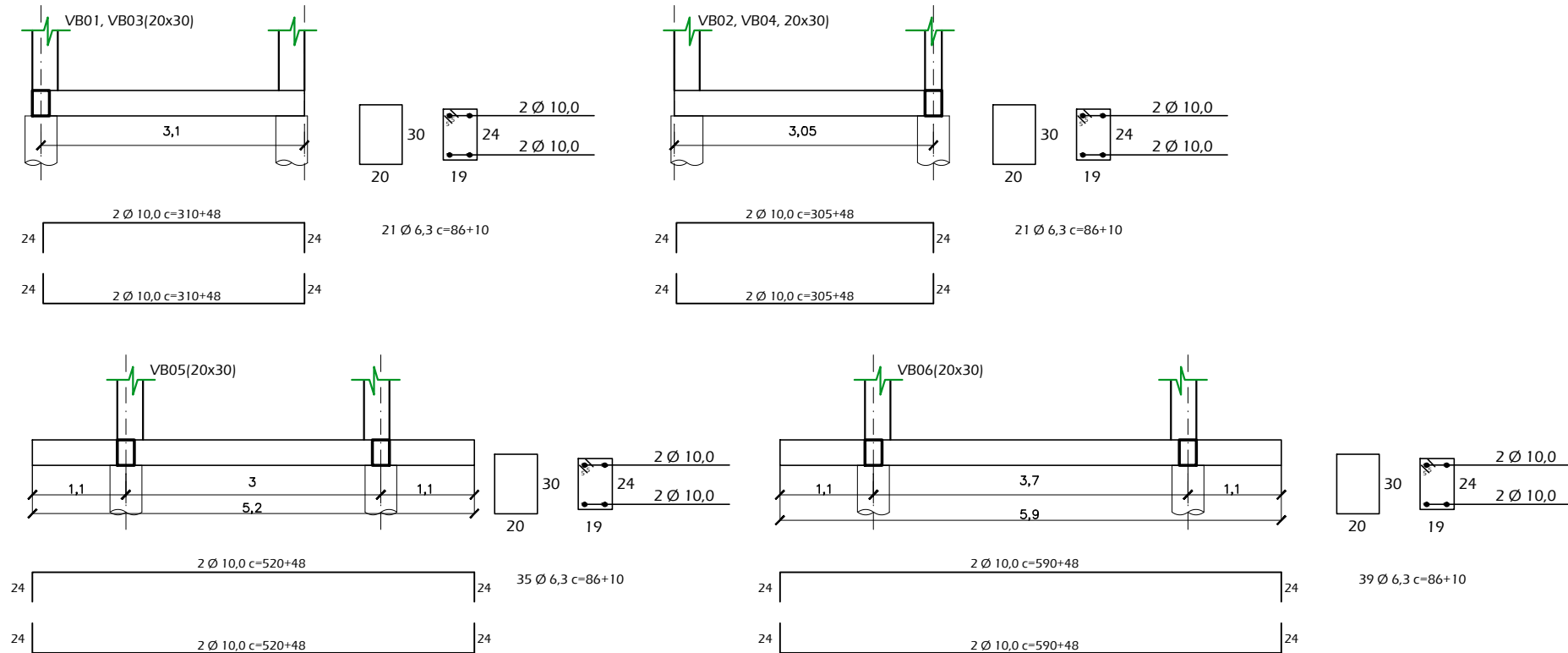
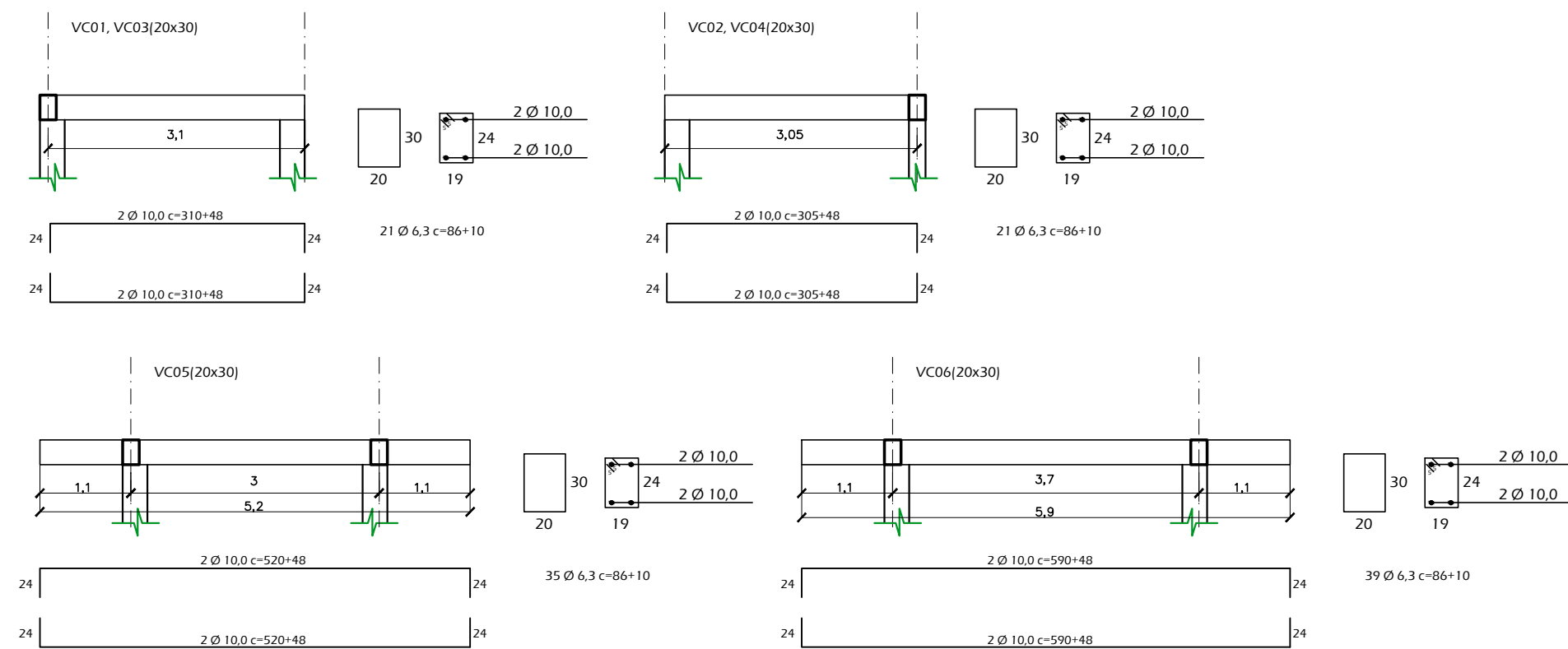


### DETALHE DAS VIGAS BALDRAMES



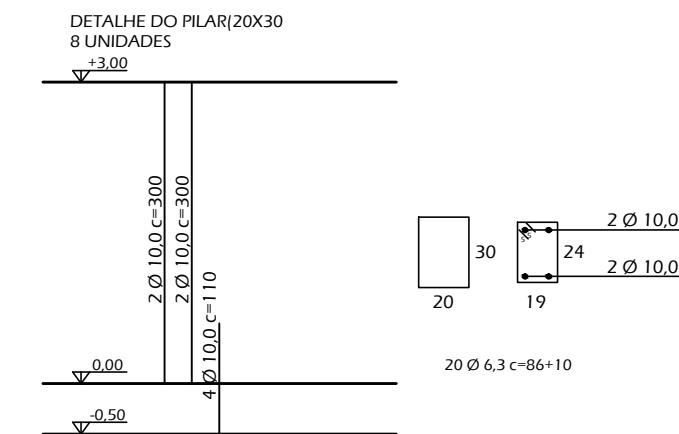
### DETALHE DAS VIGAS DE COBERTURA



VIGA	AÇO	POS	BIT	QUANT	COMPRIM UNIT	TOTAL
<b>VB01</b>						
	50A	.1	10,0	2	358	716
	50A	.2	10,0	2	358	716
	60B	.3	6,3	21	96	2016
<b>VB02</b>						
	50A	.1	10,0	2	353	706
	50A	.2	10,0	2	353	706
	60B	.3	6,3	21	96	2016
<b>VB03</b>						
	50A	.1	10,0	2	358	716
	50A	.2	10,0	2	358	716
	60B	.3	6,3	21	96	2016
<b>VB04</b>						
	50A	.1	10,0	2	353	706
	50A	.2	10,0	2	353	706
	60B	.3	6,3	21	96	2016
<b>VB05</b>						
	50A	.1	10,0	2	568	1136
	50A	.2	10,0	2	568	1136
	60B	.3	6,3	35	96	3360
<b>VB06</b>						
	50A	.1	10,0	2	638	1276
	50A	.2	10,0	2	638	1276
	60B	.3	6,3	39	96	3744
<b>RESUMO AÇO CA-50A E CA-60B</b>						
	AÇO	BIT	COMPR	PESO		
	50A	10,0	115,632	64,75		
	60B	6,3	166,848	41,71		
	Concreto			1,54 m³		
	Área da forma			10,30 m²		

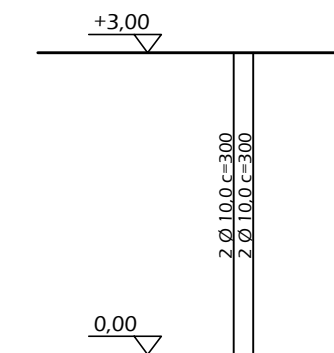
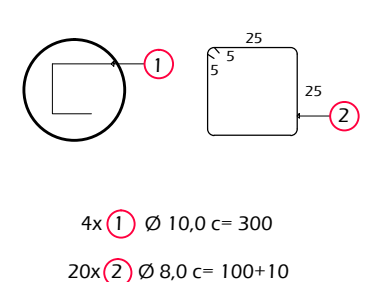
VIGA	AÇO	POS	BIT	QUANT	COMPRIM UNIT	TOTAL
<b>VC01</b>						
	50A	.1	10,0	2	358	716
	50A	.2	10,0	2	358	716
	60B	.3	6,3	21	96	2016
<b>VC02</b>						
	50A	.1	10,0	2	353	706
	50A	.2	10,0	2	353	706
	60B	.3	6,3	21	96	2016
<b>VC03</b>						
	50A	.1	10,0	2	358	716
	50A	.2	10,0	2	358	716
	60B	.3	6,3	21	96	2016
<b>VC04</b>						
	50A	.1	10,0	2	353	706
	50A	.2	10,0	2	353	706
	60B	.3	6,3	21	96	2016
<b>VC05</b>						
	50A	.1	10,0	2	568	1136
	50A	.2	10,0	2	568	1136
	60B	.3	6,3	35	96	3360
<b>VC06</b>						
	50A	.1	10,0	2	638	1276
	50A	.2	10,0	2	638	1276
	60B	.3	6,3	39	96	3744
<b>RESUMO AÇO CA-50A E CA-60B</b>						
	AÇO	BIT	COMPR	PESO		
	50A	10,0	115,632	64,75		
	60B	6,3	166,848	41,71		
	Concreto			1,54 m³		
	Área da forma			10,30 m²		

### DETALHE DO PILAR

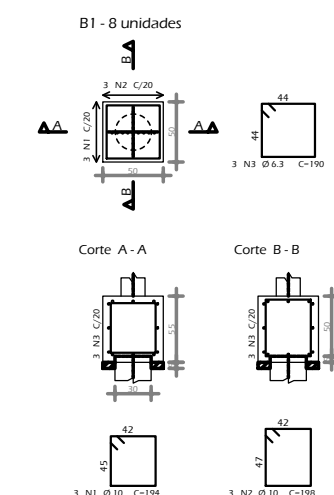


### DETALHE DA ESTACA

#### ESTACA ESCAVADA Ø37cm



### DETALHE DO BLOCO



	AÇO	POS	BIT	QUANT	COMPRIM UNIT	TOTAL
<b>BA01</b>						
8	50A	.1	10,0	3	194	582
UNID	50A	.2	10,0	3	198	594
	60B	.3	6,3	3	190	570
<b>RESUMO AÇO CA-50A E CA-60B</b>						
	AÇO	BIT	COMPR	PESO		
	50A	10,0	103,488	57,95		
	60B	6,3	50,16	12,54		
	Concreto			1,21 m³		
	Área da forma			4,84 m²		

	AÇO	POS	BIT	QUANT	COMPRIM UNIT	TOTAL
<b>PILAR</b>						
8	50A	.1	10,0	2	300	600
UNID	50A	.2	10,0	2	300	600
	50A	.3	10,0	4	110	440
	60B	.4	6,3	20	96	1920
<b>RESUMO AÇO CA-50A E CA-60B</b>						
	AÇO	BIT	COMPR	PESO		
	50A	10,0	144,32	80,82		
	60B	6,3	168,96	42,24		
	Concreto			1,58 m³		
	Área da forma			10,56 m²		

	AÇO	POS	BIT	QUANT	COMPRIM UNIT	TOTAL
<b>ESTACA</b>						
8	50A	.1	10,0	4	300	1200
UNID	60B	.2	6,3	20	110	2200
<b>RESUMO AÇO CA-50A E CA-60B</b>						
	AÇO	BIT	COMPR	PESO		
	50A	10,0	105,6	59,14		
	60B	6,3	193,6	48,40		
	Concreto			1,49 m³		



Rua Campos Sales, 196 - Itapetininga-SP Fone/Fax: 3527-1897 e-mail: arq.lucastello@terra.com.br

USF MÁRCIA REGINA SARDELA

ÁREA DO TERRENO:

CLIENTE:  
PREFEITURA MUNICIPAL DE ITAPETININGA  
LOCAL:  
RUA EVILÁSIO MASSAINE PIRES, N°357  
VILA ARRUDA - ITAPETININGA-SP

ÁREA:  
Total - 266,38m² ÁREA TOTAL:  
Terreno-584,96m²

ASSUNTO  
DETALHES

DEZ/2013 ESCALA 1: 75

direitos autorais reservados

2/2