

	ACO	POS	BIT	QUANT	COMPRIM	UNIT	TOTAL
PILAR							
3	50A	1	10,0	2	300	600	
	50A	2	10,0	2	300	600	
	50A	3	10,0	4	110	440	
	60B	4	6,3	20	96	1920	

RESUMO AÇO CA-50A E CA-60B							
ACO	BIT	COMPR	PESO				
50A	10,0	54,12	30,31				
60B	6,3	63,36	15,84				
Concreto			0,59 m²				
Área da forma			3,96 m²				

	ACO	POS	BIT	QUANT	COMPRIM	UNIT	TOTAL
ESTACA							
7	50A	1	10,0	4	300	1200	
	60B	2	6,3	20	110	2200	
	50A	3	10,0	4	110	440	
	60B	4	6,3	20	96	1920	

RESUMO AÇO CA-50A E CA-60B							
ACO	BIT	COMPR	PESO				
50A	10,0	92,4	51,74				
60B	6,3	169,4	42,35				
Concreto			1,30 m²				

VIGA	ACO	POS	BIT	QUANT	COMPRIM	UNIT	TOTAL
VC01							
50A	1	10,0	2	278	556		
50A	2	10,0	2	278	556		
60B	3	6,3	16	96	1536		
VC02							
50A	1	10,0	2	268	536		
50A	2	10,0	2	268	536		
60B	3	6,3	15	96	1440		
VC03							
50A	1	10,0	2	268	536		
50A	2	10,0	2	268	536		
60B	3	6,3	15	96	1440		
VC04							
50A	1	10,0	2	528	1056		
50A	2	10,0	2	528	1056		
60B	3	6,3	32	96	3072		
VC05							
50A	1	10,0	2	208	416		
50A	2	10,0	2	208	416		
60B	3	6,3	11	96	1056		
VC06							
50A	1	10,0	2	178	356		
50A	2	10,0	2	178	356		
60B	3	6,3	9	96	864		

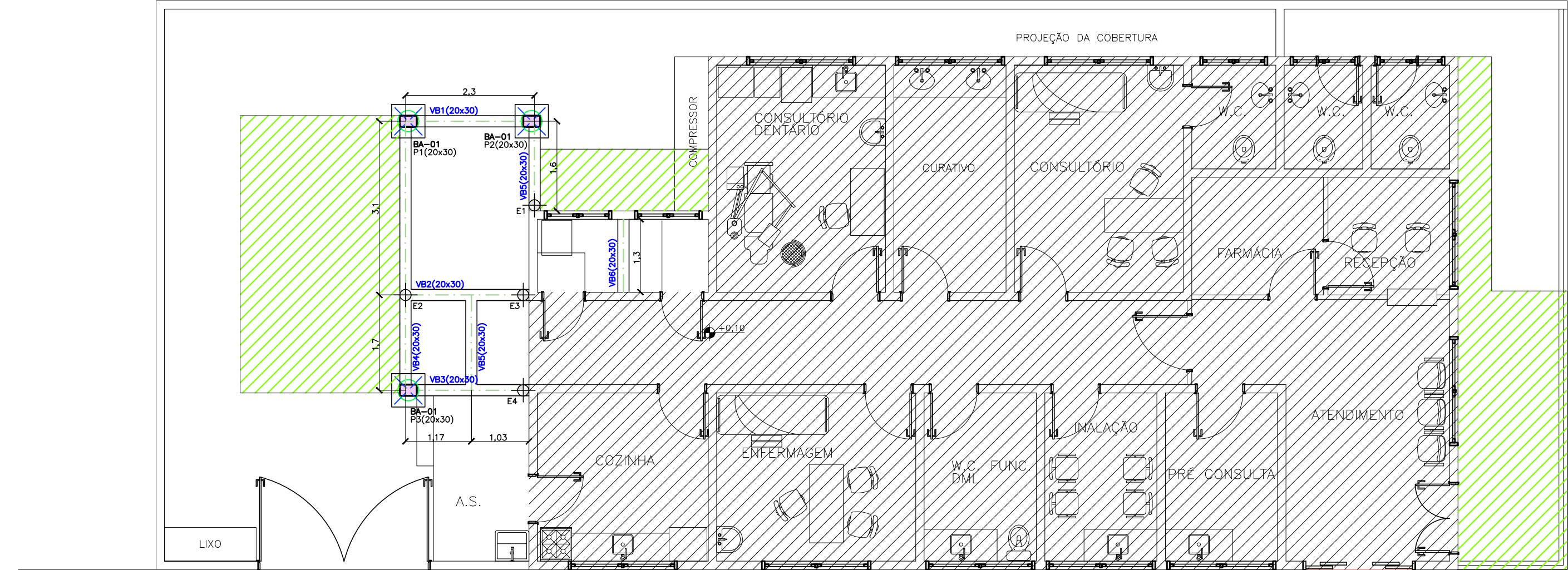
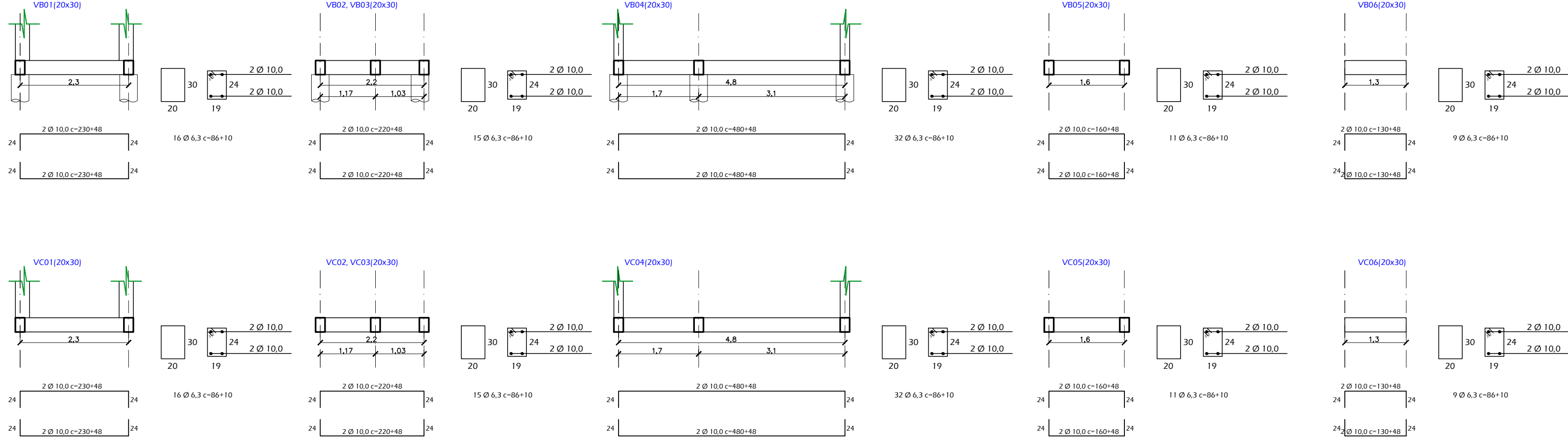
RESUMO AÇO CA-50A E CA-60B							
ACO	BIT	COMPR	PESO				
50A	10,0	76,032	42,58				
60B	6,3	103,488	25,87				
Concreto			0,95 m²				
Área da forma			6,34 m²				

	ACO	POS	BIT	QUANT	COMPRIM	UNIT	TOTAL
BA01							
3	50A	1	10,0	3	194	582	
	50A	2	10,0	3	198	594	
	60B	3	6,3	3	190	570	
	60B	4	6,3	3	190	570	

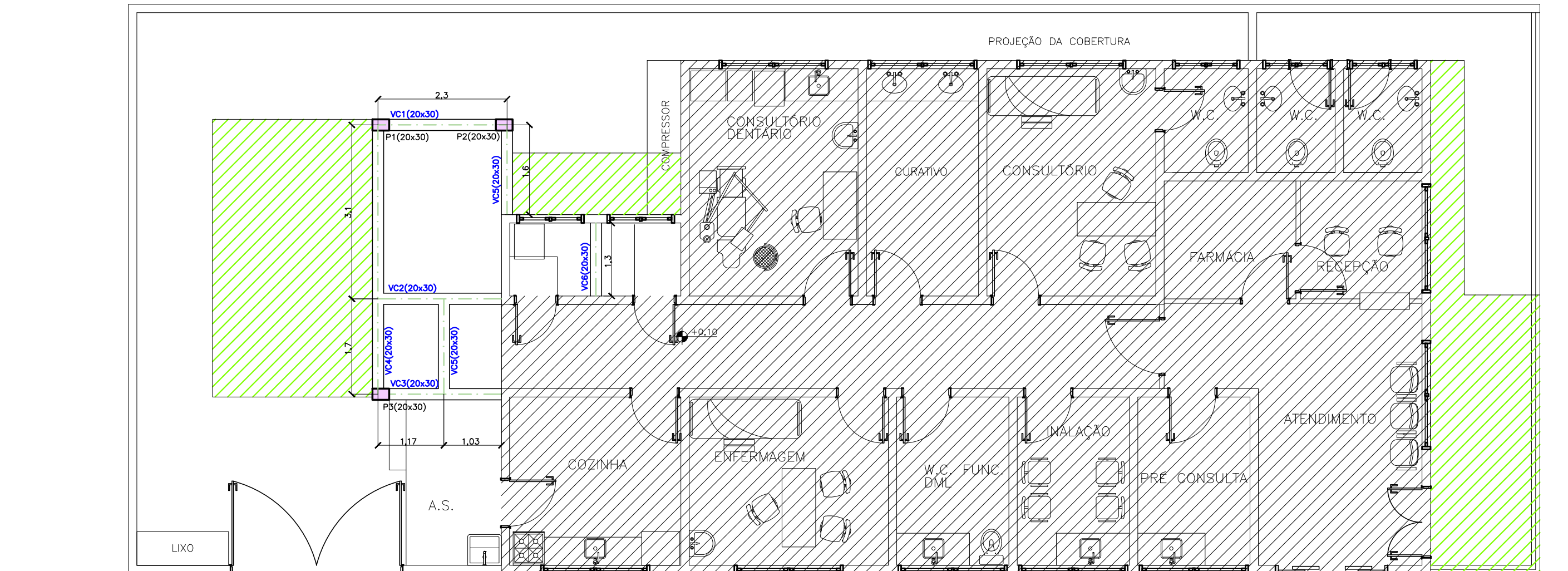
RESUMO AÇO CA-50A E CA-60B							
ACO	BIT	COMPR	PESO				
50A	10,0	38,808	21,73				
60B	6,3	18,81	4,70				
Concreto			0,45 m²				
Área da forma			1,82 m²				

VIGA	ACO	POS	BIT	QUANT	COMPRIM	UNIT	TOTAL
VB01							
50A	1	10,0	2	278	556		
50A	2	10,0	2	278	556		
60B	3	6,3	16	96	1536		
VB02							
50A	1	10,0	2	268	536		
50A	2	10,0	2	268	536		
60B	3	6,3	15	96	1440		
VB03							
50A	1	10,0	2	268	536		
50A	2	10,0	2	268	536		
60B	3	6,3	15	96	1440		
VB04							
50A	1	10,0	2	528	1056		
50A	2	10,0	2	528	1056		
60B	3	6,3	32	96	3072		
VB05							
50A	1	10,0	2	208	416		
50A	2	10,0	2	208	416		
60B	3	6,3	11	96	1056		
VB06							
50A	1	10,0	2	178	356		
50A	2	10,0	2	178	356		
60B	3	6,3	9	96	864		

RESUMO AÇO CA-50A E CA-60B							
ACO	BIT	COMPR	PESO				
50A	10,0	76,032	42,58				
60B	6,3	103,488	25,87				
Concreto			0,95 m²				
Área da forma			6,34 m²				

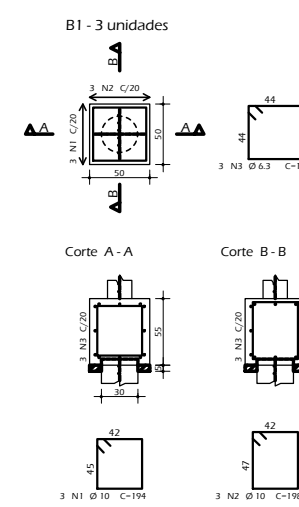


FORMAS DA FUNDAÇÃO
ESC.: 1:75

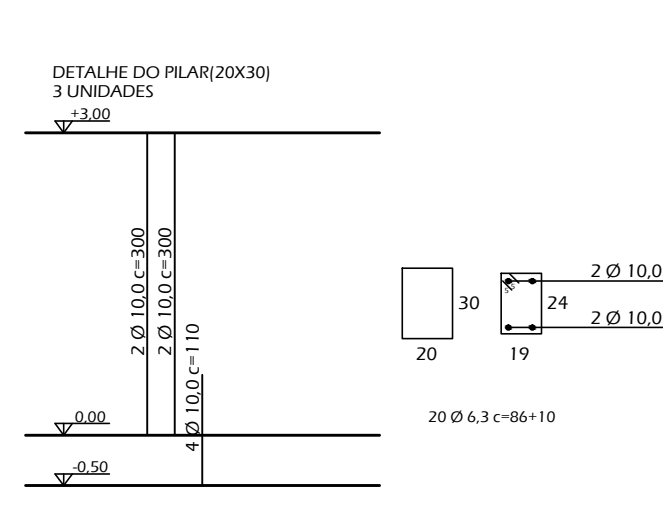


SUPERESTRUTURA
ESC.: 1:75

DETALHE DO BLOCO

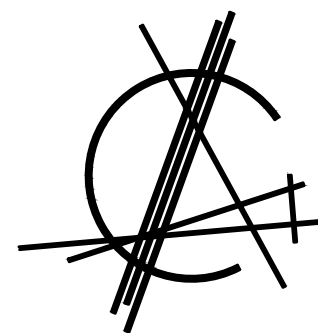
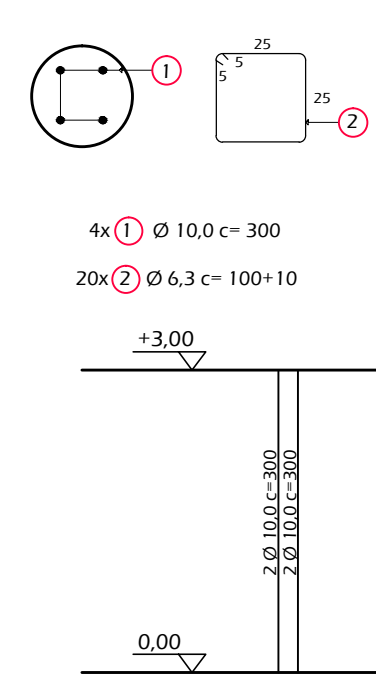


DETALHE DO PILAR



DETALHE DA ESTACA

ESTACA ESCAVADA Ø37cm
7 UNIDADES



HABITAT
Arquitetura e Engenharia

Rua Campos Sales, 196 - Itapetininga-SP Fone/Fax: 3527-1897 e-mail: arq.hucanelli@terra.com.br

P.A.S. POSTO TUPY

CLIENTE:
PREFEITURA MUNICIPAL DE ITAPETININGA
LOCAL:
POSTO TUPY, S/N°
ITAPETININGA-SP

ÁREA:
Total - 255,48m²
Terreno - 154,94m²

ASSUNTO
FORMAS DA FUND.
SUPERESTRUTURA
dez/2013

FOLHA

F.U.

ESCALA
1:75

direitos autorais reservados